

Key of C major

A musical staff with a treble clef and a bass clef. The treble clef staff contains the notes C4, D4, E4, F4, G4. The bass clef staff contains the notes C3, D3, E3, F3, G3. Below the notes are the syllables 'do re mi fa sol'.

PITCH ROUTINE #8

Sing each line individually and in any combination.

Eight numbered musical lines (1-8) in 4/4 time, each on a single treble clef staff. Each line contains a sequence of notes and rests, starting with a common C4. Line 1: C4, D4, E4, F4, G4, A4, B4, C5, B4, A4, G4, F4, E4, D4, C4. Line 2: C4, D4, E4, F4, G4, A4, B4, C5, B4, A4, G4, F4, E4, D4, C4. Line 3: C4, D4, E4, F4, G4, A4, B4, C5, B4, A4, G4, F4, E4, D4, C4. Line 4: C4, D4, E4, F4, G4, A4, B4, C5, B4, A4, G4, F4, E4, D4, C4. Line 5: C4, D4, E4, F4, G4, A4, B4, C5, B4, A4, G4, F4, E4, D4, C4. Line 6: C4, D4, E4, F4, G4, A4, B4, C5, B4, A4, G4, F4, E4, D4, C4. Line 7: C4, D4, E4, F4, G4, A4, B4, C5, B4, A4, G4, F4, E4, D4, C4. Line 8: C4, D4, E4, F4, G4, A4, B4, C5, B4, A4, G4, F4, E4, D4, C4.

P Key of F major

do re mi fa sol

A musical staff with a treble clef and a key signature of one flat (F major). The notes are: do (F), re (G), mi (A), fa (Bb), sol (C). The notes are written on a grand staff with a brace on the left.

Pitch Practice

Sing each line. Lines 1, 3, 5, 7 may be combined. Lines 2, 4, 6, 8 may be combined.

①

②

③

④

⑤

⑥

⑦

⑧

SIGHTSINGING EXAMPLES – HONORS CHORUS AUDITION

1. C



5



Detailed description: Example 1 consists of two staves of music in C major, 4/4 time. The first staff contains the first four measures, and the second staff contains the fifth measure. The melody is: C4, D4, E4, F4, G4, A4, B4, C5, B4, A4, G4, F4, E4, D4, C4.

2. F

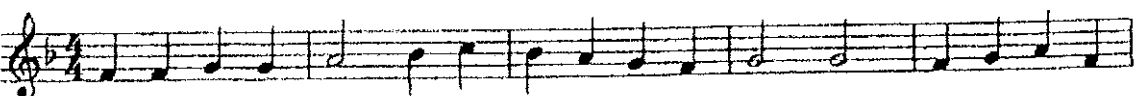


5



Detailed description: Example 2 consists of two staves of music in F major, 4/4 time. The first staff contains the first four measures, and the second staff contains the fifth measure. The melody is: F4, G4, A4, Bb4, C5, Bb4, A4, G4, F4, E4, D4, C4, Bb3, A3, G3, F3.

3. F



Detailed description: Example 3 consists of two staves of music in F major, 4/4 time. The first staff contains the first four measures, and the second staff contains the fifth measure. The melody is: F4, G4, A4, Bb4, C5, Bb4, A4, G4, F4, E4, D4, C4, Bb3, A3, G3, F3.

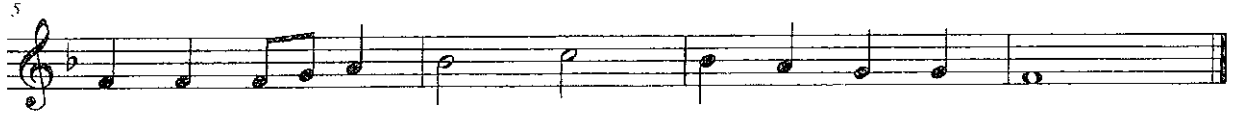
4. C



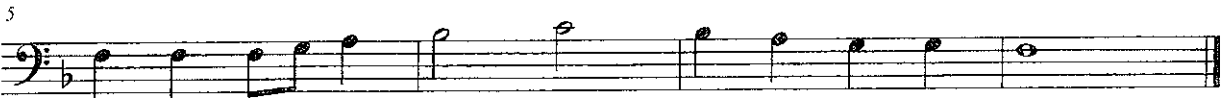
Detailed description: Example 4 consists of two staves of music in C major, 4/4 time. The first staff contains the first four measures, and the second staff contains the fifth measure. The melody is: C4, D4, E4, F4, G4, A4, B4, C5, B4, A4, G4, F4, E4, D4, C4.

2011 NC Honors Chorus Sight-Reading

1- S/A



2- T/B



- what key is number 3 in? "Do" is what note in number 3?
- what key is number 4 in? "Do" is what note in number 4?

